

Inkråmsförteckning Door n Dock Solutions Sweden AB - Upplagsplats Bro

1. Lastdocka



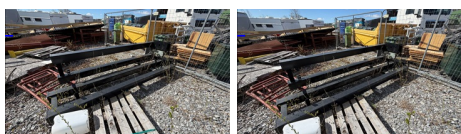
2. Parti säkerhetsdörrar



3. 20 fots container med diversematerial (Spillmaterial samt temporära kyldörrar)



4. Grindstolpar till entregrind



5. Diverse balkar f





2

DALOC

CE

0402

DALOC AB, Box 43
SE-545 21 Töreboda
www.daloc.com

18

EN 16034:2014
EN 14351-1:2006 A2:2016

Y10

Fire resistant and
smoke controlling
pedestrian door set

ID: 202301079- 15

Resistance to fire	EI ₂ 15 EW 60
Smoke control	-
Self-closing	C
Durability of self-closing against degreg.	5
Resistance to wind load	class 2E
Watertightness	NPD
Dangerous substances	pass
Acoustic performance Rw(C,Ctr) dB	
Thermal transmittance Ud	1,8
Air permeability	NPD

12



purpose.



DALOC

CE

DALOC AB, Box 43
S-545 21 Töreboda
www.daloc.com

10

EN 14351-1:
2006+A2:2016

Y60

Pedestrian door for
commercial or
domestic location.

Resistance wind load
NPD

Watertightness
NPD

Dangerous subst. ces.
pass

Acoustic performance

R_w dB

Thermal transmittance

u_0 NPD

Air permeability

NPD

Impact resist. glass

NPD

Ability to release

NPD

Operating forces

NPD

Load-bearing capacity
of safety device

NPD

201701556_22

13

DALOC

CE

DALOC AB, Box 43
S-545 21 Töreboda
www.daloc.com

10

EN 14351-1:
2006+A2:2016

Y63

Pedestrian door for
commercial or
domestic location.

Resistance wind load
NPD

Watertightness
NPD

Dangerous substances
pass

Acoustic performance
 R_w 38 (-2, -6) dB

Thermal transmittance
 U_o NPD

Air permeability
NPD

Impact resist glass
NPD

Ability to release
NPD

Operating forces
NPD

Load-bearing capacity
of safety device
NPD

Id. 201904464-5

5







DALOC

CE

0402

DALOC AB, Box 43
SE-545 21 Töreboda
www.daloc.com

10

EN 14351-1:2006+A2:2016

Y33

Pedestrian door
for commercial or
domestic location

ID: 202403323- 8

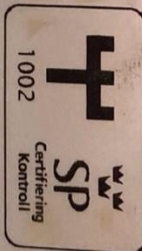
Resistance to wind load	class 3B
Watertightness	class 7B
Acoustic performance Rw(C, Ctr) dB	38(-2,-6)
Thermal transmittance Ud	1,9
Air permeability	class 4

17

DALOC

Töreboda
+46 506 19000

Typ Y63RC4	SERIE NR. 201805227-8
Brandklass A 60	Typg nr. 0039/06
Ljudreduktion Rw 38 dB	



an för krav. Om
karmen som tr

Botkoll > 246 mmj

8





DALOC

CE

0402

DALOC AB, Box 43
SE-545 21 Töreboda
www.daloc.com
18

EN 16034:2014
EN 14351-1:2006 A2:2016

Y10

Fire resisting and
smoke control
Pedestrian door set

Resistance to fire	-
Smoke control	-
Self-closing	C
Durability of self-closing -against degregation	5
Resistance to wind load	NPD
Watertightness	NPD
Dangerous substances	pass
Acoustic performance R_w	dB
Thermal transmittance U_g	NPD
Air permeability	NPD

id. 202202090- 4

1



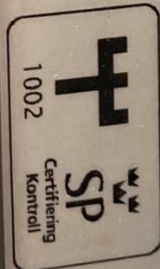




DALOC

Töreboda
+46 506 19000

Typ Y63RC4	SERIE NR. 201904464-5
Brandklass A 60	Typg.nr. 0039/06
Ljudreduktion Rw 38 dB	



4

DALOC





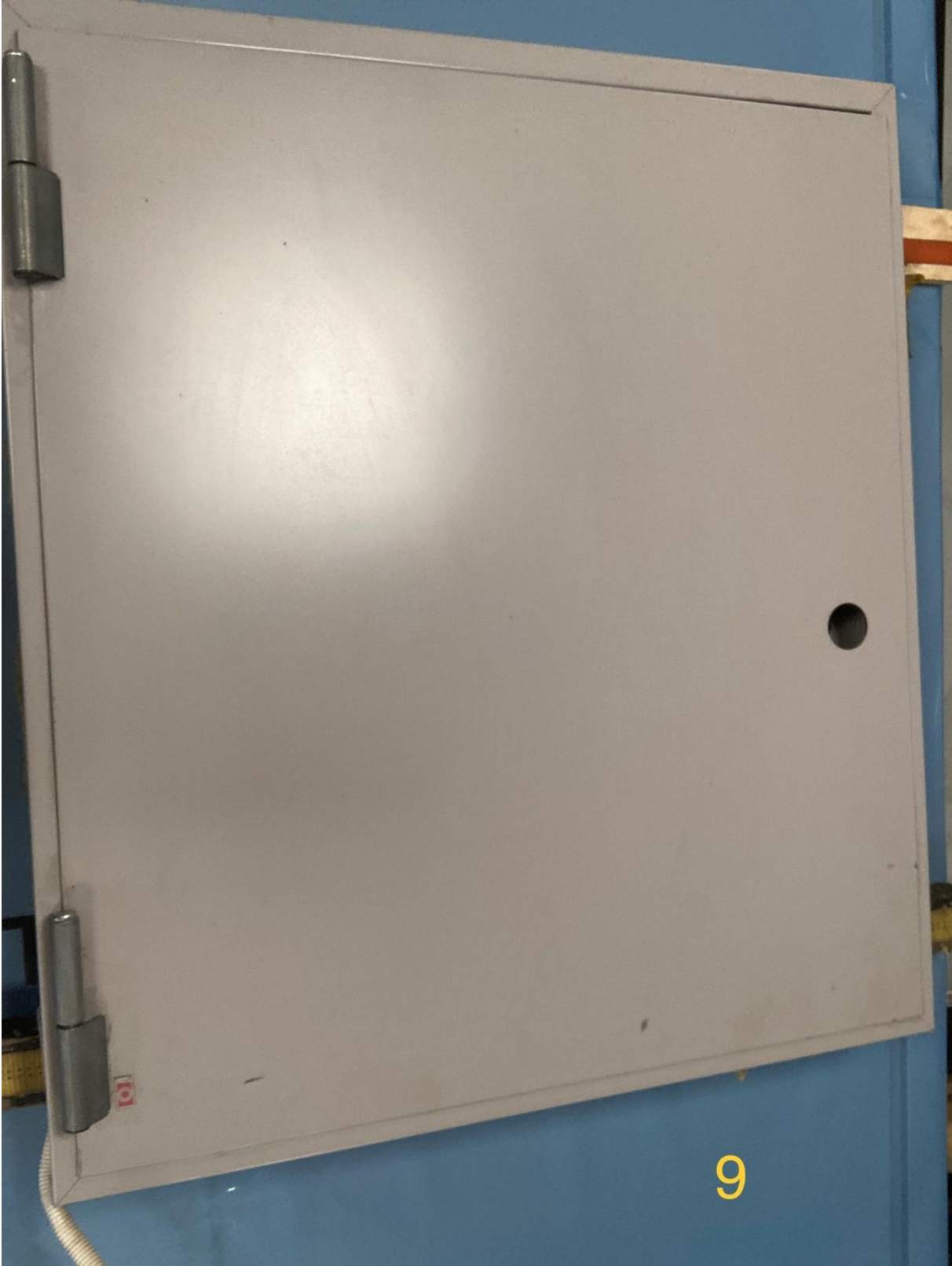


15





17







DALOC

Töreboda
+46 506 19000


Typ S10	SERIE NR. 202101185-30
Brandklass E12 15/EW 60	Typg.nr. C900048



3



DALOC Töreboda +46 606 19000	Typ S60	SERIE NR. 201801440- 16
	Brandklass A 60	Typg nr. 2874/83



12



DALOC

Töreboda
+46 506 19000

Typ S30	SERIE NR. 202503149- 5
Brandklass A 60	Typg.nr. 5766188
Ljudreduktion Rw 33 dB	



1002

CERTIFIERING
KONTROLL

**RI
SE**





HELLBERGS

Tel. +46 (0)530 40 000
www.hellbergs.se



1913

KINA CERTIFICATION AB
MODELL: HD100-2
BRANDDÖRR FÖR INOMHUSBRUK

BRANDKLASS:
EI (2) 15-EW60

RÖKGASKLASS:
-

INBRÖTTSKLASS:
-

LJUDKLASS:
-

KORROSIONSKLASS:
-

TILLVERKNINGSNR:
308307

LEVERANSVECKA:
2024-48

TYPGOI KÄNNANDE NR.:
1836

Denna skylt bör ej täckmätas

16
Dubbel



DALOC

CE

0402

DALOC AB, Box 43
SE-545 21 Töreboda
www.daloc.com

10

EN 14351-1:2006+A2:2016

Y33

Pedestrian door
for commercial or
domestic location

ID: 202403323- 7

Resistance to wind load class 3B

Watertightness class 7B

Acoustic performance 38(-2,-6)
Rw(C, Ctr) dB

Thermal transmittance Ud 1,9

Air permeability class 4

18

9

DALOC Töreboda +46 506 19000	Typ Y60	SERIE NR. 201801258- 63
	Brandklass A 60	
		Typg.nr. 2874/83

SP
1002
Certifiering
Kontroll

DALOC

